

MKIV Injector Assembly Guide

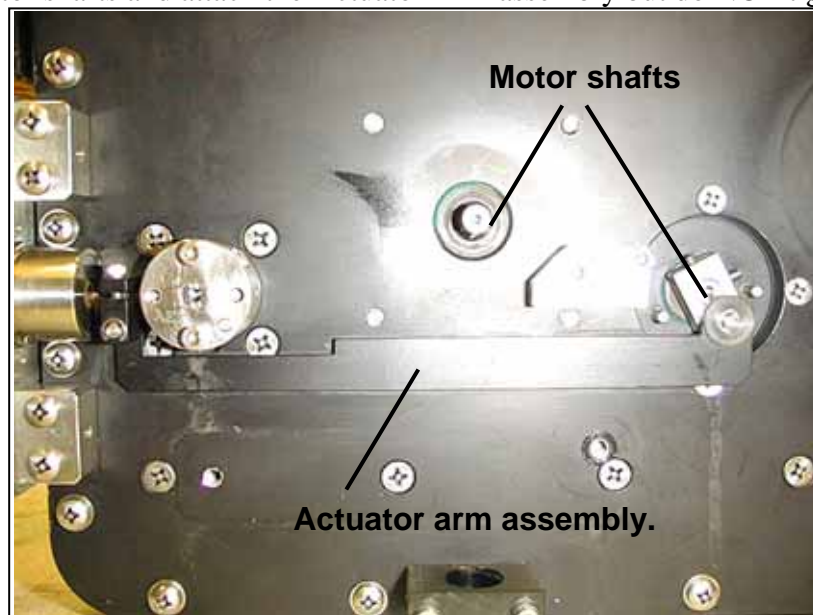
Technical Note TNC01

This guide assumes that you have already completely disassembled the outside components of a MKIV tag injector and are now ready to reassemble them.

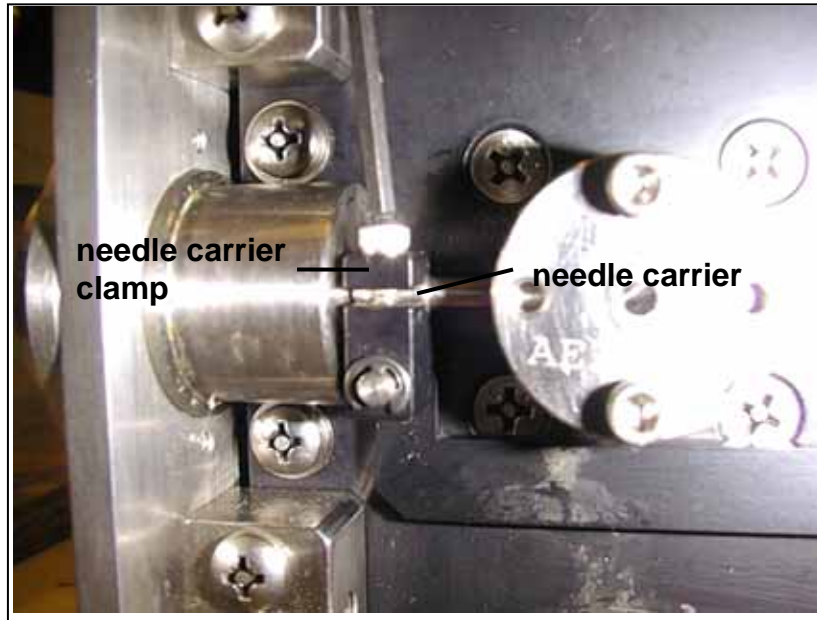
1. Insert cutter.



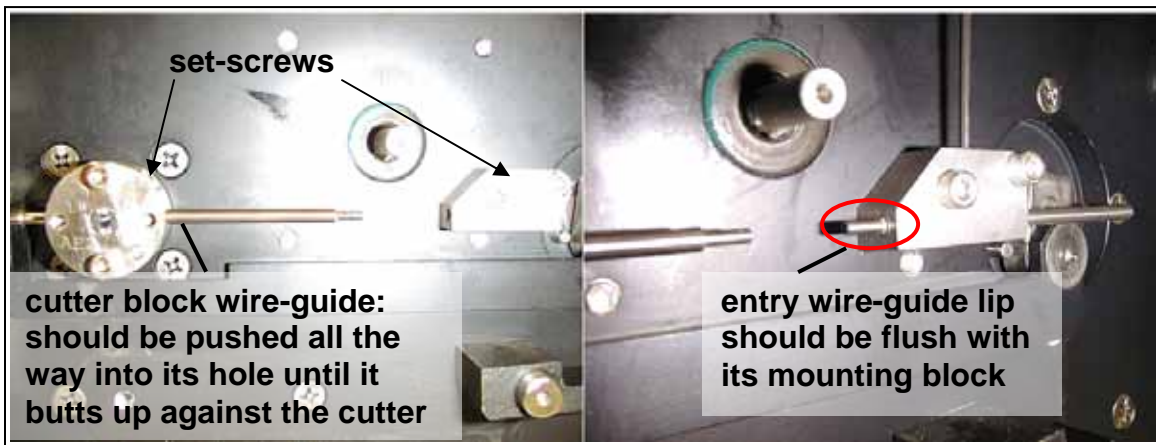
2. Lightly lube motor shafts and attach the Actuator Arm assembly but do NOT tighten yet.



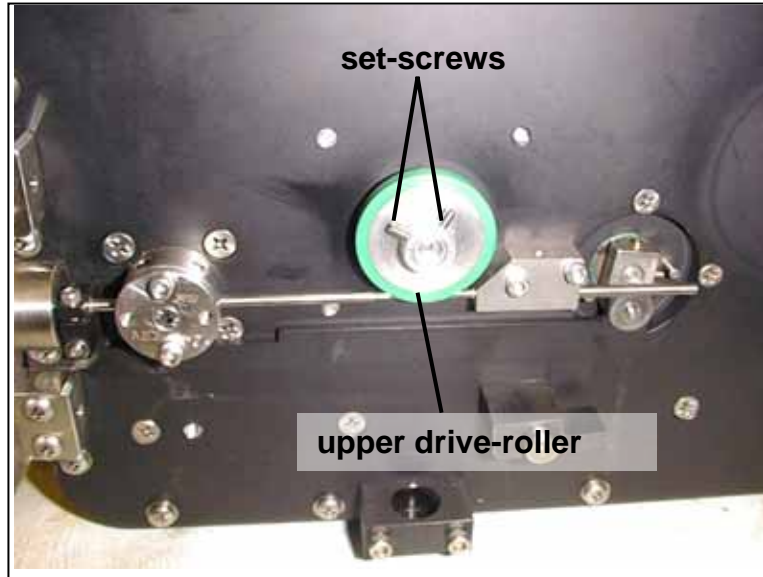
3. Insert the needle carrier so that the back lip of the needle carrier is flush with the rear of the needle carrier clamp. Tighten the needle carrier clamp.



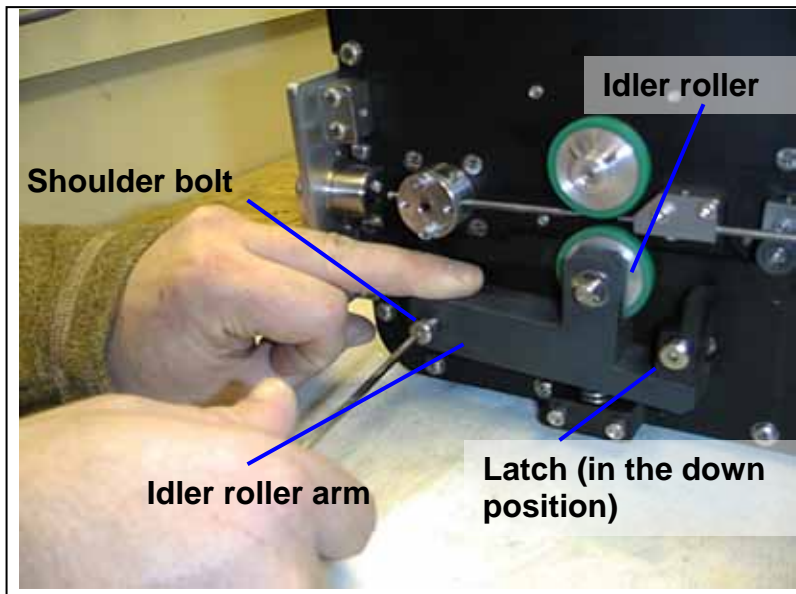
4. Insert the cutter block and entry wire-guides and tighten their respective set-screws.



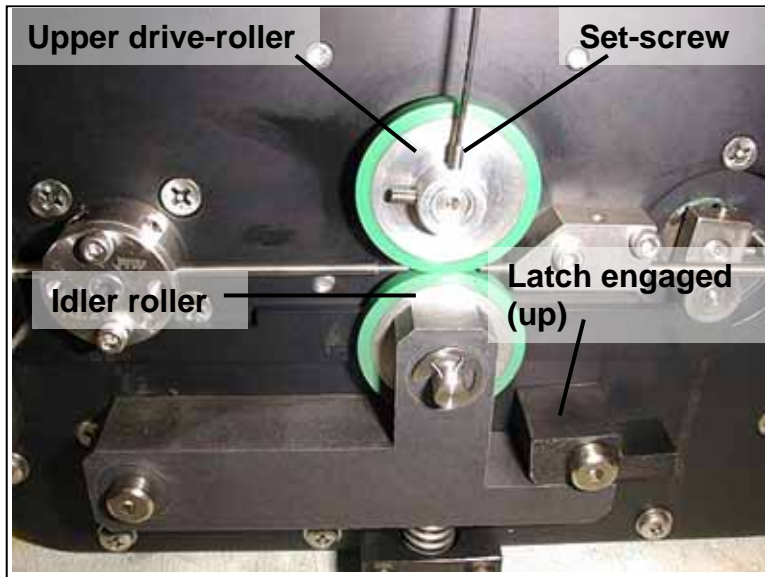
5. Slip the upper drive-roller onto its motor shaft but do **NOT** tighten its set-screws yet.



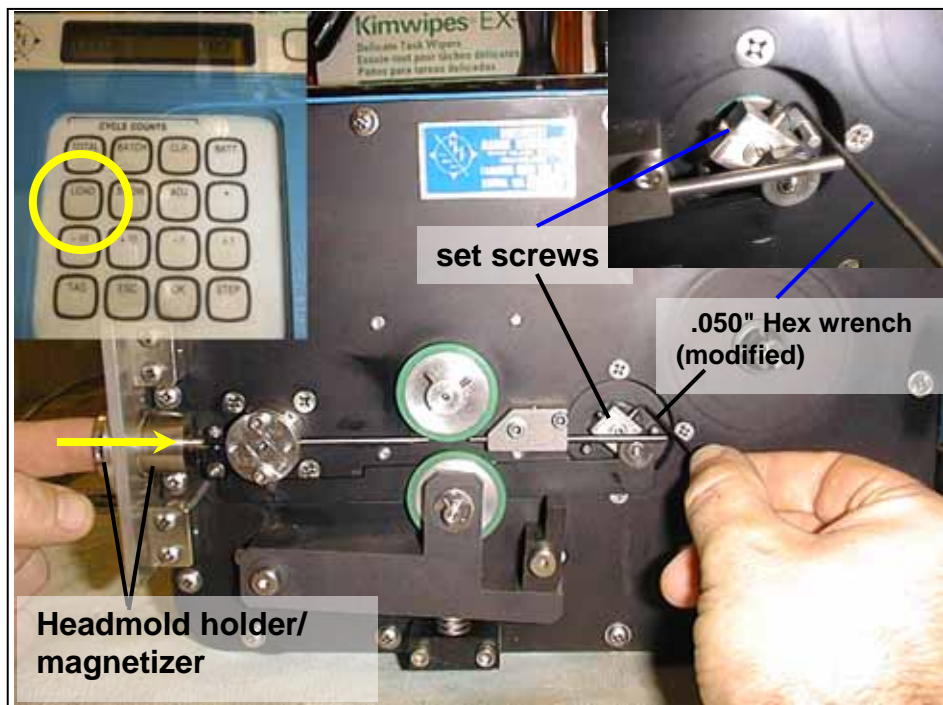
6. Fasten the idler roller arm. As you compress the spring while positioning idler roller arm and shoulder bolt, turn the latch to the disengaged position (down). Turning the latch down will not only help in lining up the shoulder bolt, but will also give added protection from the spring slamming the idler roller into the wire-guides.



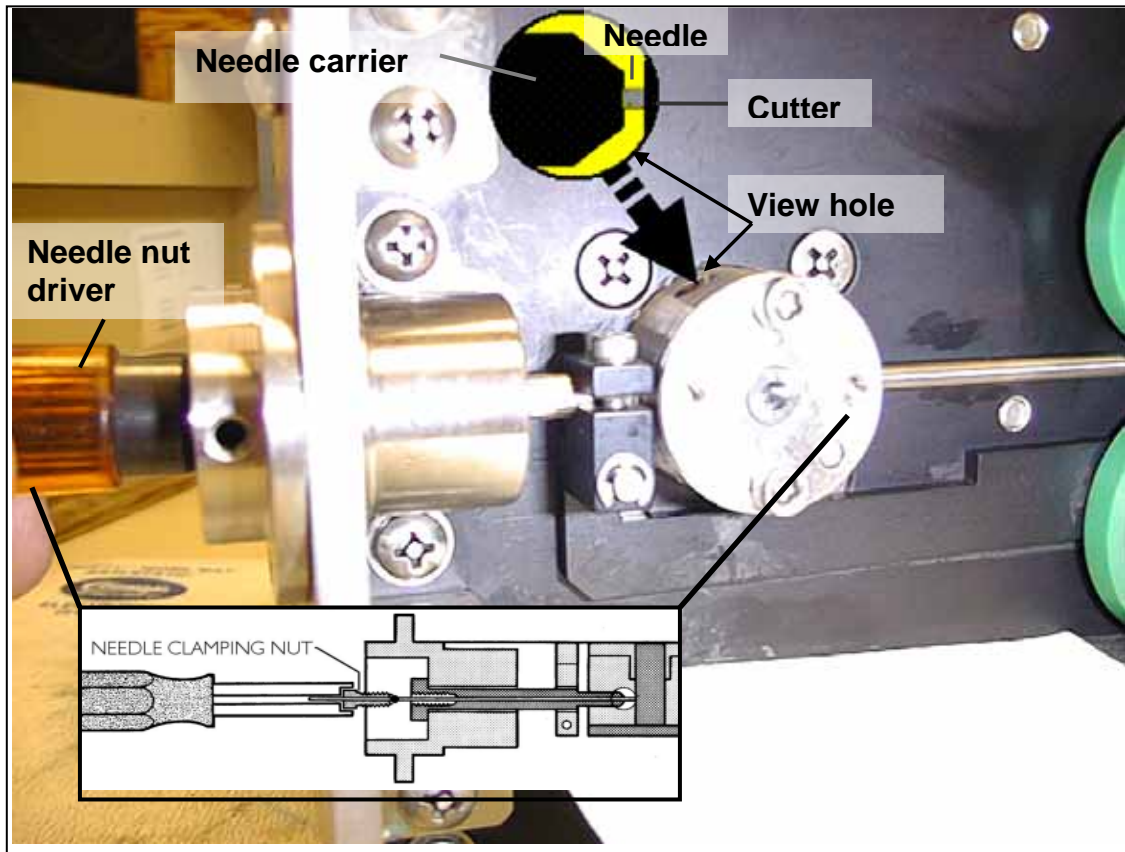
7. Engage the drive-rollers and line up the upper drive-roller with the idler-roller. Tighten the set-screws. Disengage the drive rollers.



8. Turn the injector on and enter the "Load" mode by pressing the "Load" key on the top of the injector. Push on the front of the needle carrier until it is up against the inside of the headmold holder/magnetizer. Use the modified .050" L-shaped hex wrench from the MKIV toolkit and tighten the setscrews of the actuator arm assembly.



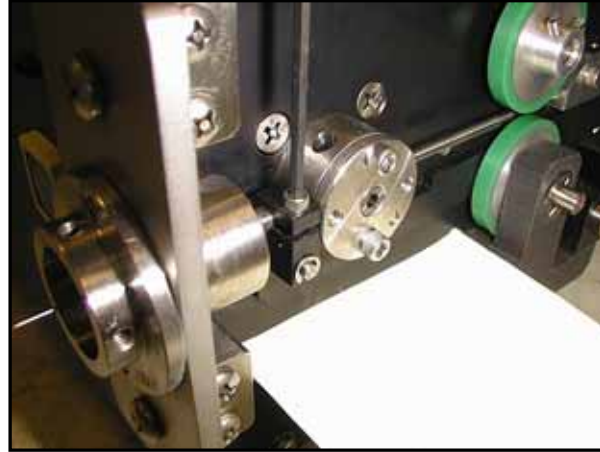
9. With the injector still in "Load", insert the needle until it butts up against the cutter, and tighten the needle nut. A piece of paper or something bright below the view hole helps to see.



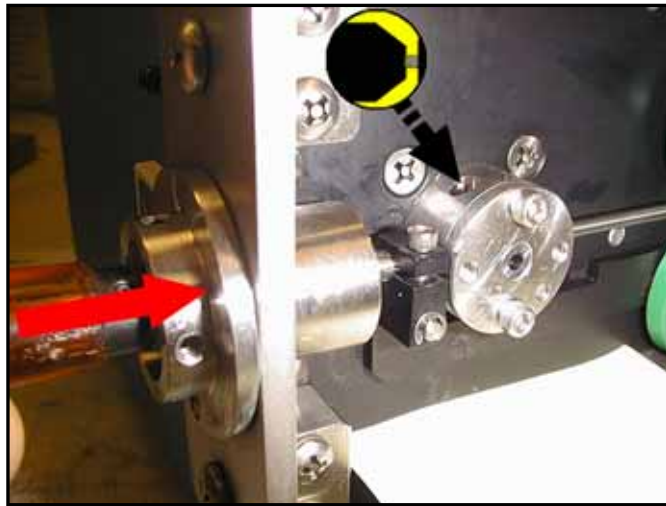
Press the "Esc" key.

One can be fairly sure at this point that MKIV injector's needle is properly set up; however, to be absolutely sure that there is the proper gap between the needle and the cutter follow remaining three steps.

10. Exit "Load" by pressing the "Esc" key.
Loosen the needle carrier clamp.



11. With the needle carrier clamp still loose, *push* the needle/needle carrier towards the cutter until you see the needle touch the cutter.



12. Press the "*Load*" key, while still holding the needle against the cutter, and then *tighten* the needle carrier clamp. Press "Esc".

